



4-8 Schooner Rise River Heads Qld

2 🏠 1 🚗 5 🚗

The seller has committed to purchasing another home and is calling for an immediate sale!

This lovely low-maintenance home is perfectly positioned on a large 2000m² allotment at "Turtle Cove" in the popular Bayside suburb of River Heads. This is where you will enjoy the lifestyle that comes with being only minutes away from the River Heads boat ramp and Ferry services to world heritage-listed K'gari - Fraser Island. You can launch your boat and access the Great Sandy Straits and the Mary and Susan Rivers, a fishing, prawning and crabbing paradise.

This modern steel-frame home was completed in 2017, leaving nothing to do but enjoy your new lifestyle. The expansive north-facing covered timber deck features shade blinds and a timber bench. This is the ideal space to enjoy your morning cuppa with the first light of each day, can double as an outdoor entertaining area and offers direct access into the home.

4-8 Schooner Rise River Heads features: -

- A large 2000m² allotment in "Turtle Cove", River Heads
- A steel frame home featuring high cathedral ceilings over the living and dining area
- Two spacious bedrooms, each with a ceiling fan, and built-in wardrobes
- The bathroom features a shower and a vanity, and there is a separate toilet
- The kitchen features ample bench preparation and storage space, plus a pantry
- Appliances include an electric hotplate with a rangehood and an oven
- A vast open-plan living and dining area, with split system air conditioning

- An expansive north-facing covered timber deck with shade blinds and a built-in timber bench servery
- A fantastic covered outdoor entertaining deck with shade blinds and two large timber benches
- A great fire pit space surrounded by established gardens
- A high entry triple carport offering covered access directly to the home
- An approx. 12 x 6 metre shed with power connected. This shed has two roller door vehicle bays as well as a large storage bay with built-in storage racks, and at the opposite end, you have a workshop space and utility room
- Loads of space to accommodate a large RV, caravan or boat
- An approx. 5.4 kW solar power system and solar hot water system
- Four large rainwater tanks, three with pumps, for the irrigation system to keep the established low-maintenance gardens and lawns watered

The seller has reduced the price for an immediate sale, and homes offering these features in this price range are always in high demand, so don't miss this opportunity!

The seller has committed to purchasing another property and is inviting all offers. Contact our team now to arrange your private inspection or video call walk-through - you will only be disappointed if you miss this one ?

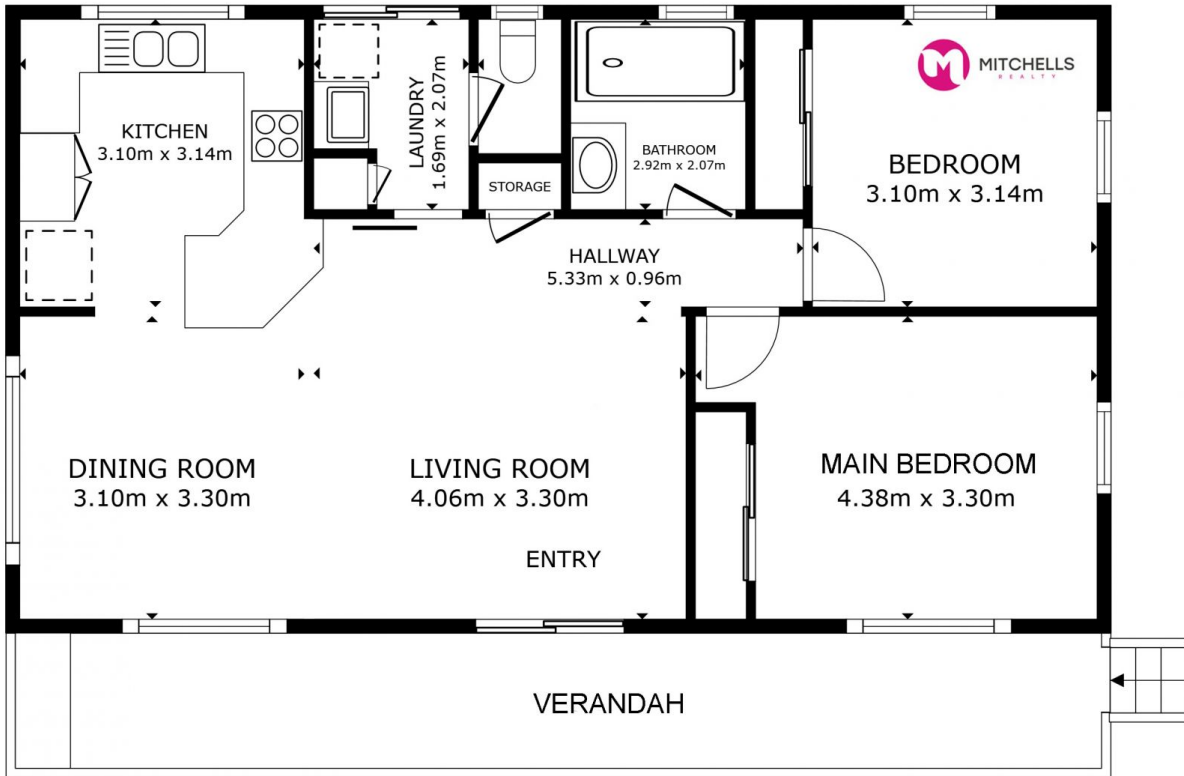
NOTE: Property boundary lines are shown as approximate/indicative only in associated images - please refer to survey plans for full details.

DISCLAIMER: Whilst every effort has been made to ensure the accuracy and thoroughness of the information provided to you in our marketing material, we cannot guarantee the accuracy of the information provided by our vendors, and as such, Mitchells Realty makes no statement, representation or warranty, and assumes no legal liability in relation to the accuracy of the information provided. Interested parties should conduct their own due diligence in relation to each property they are considering purchasing. All photographs, maps, and images are representative only for marketing purposes.

Price : Offers from \$850,000-
Land Size : 2000 sqm
View : <https://www.mitchellsrealty.com.au/property/48-schooner-rise-river-heads-qld/8662849>



Scott & Katrina Mitchell
0428 484 499



FLOOR PLAN

GROSS INTERNAL AREA
 FLOOR PLAN 76.8 m²
 EXCLUDED AREAS : BALCONY 17.4 m²
 TOTAL : 76.8 m²
 SIZES AND DIMENSIONS ARE APPROXIMATE, ACTUAL MAY VARY.

