



## 6 Homebush Road Dundowran Beach QLD

2 🏠 2 🚿 2 🚗

Enviably set in the highly sought-after Hervey Bay Northern Beaches, easy walking distance to secluded pet-friendly Dundowran Beach - 6 Homebush Rd offers the lifestyle and tranquillity that come with living on a large 2380 m2 allotment with lovely established trees and vegetation, with abundant birdlife.

You also have the convenience of being only a short drive away from a local Food Works, Fish market, takeaway and pharmacy, and Hervey Bay's essential amenities, including shopping centres, Hospitals, Bunnings, Schools, Golf courses, the esplanade, café, restaurants and the beach.

6 Homebush Rd, Dundowran Beach, features: -

- A 2380m2 allotment within easy walking distance to beautiful secluded Dundowran beach
- A quality brick home professionally repainted throughout, as well as having new flooring laid
- Two spacious bedrooms, with new ceiling fans and built-in wardrobes
- The main bedroom offers access to a parents' retreat and includes a ceiling fan, split-system air-conditioning, a walk-in wardrobe and a lavish new ensuite
- The bathroom includes a shower, bath and a vanity, and there is a separate toilet
- A home office that could make up a third bedroom if needed
- The stylish kitchen sits below a high cathedral ceiling and features plenty of bench and storage space, plus a pantry
- Quality appliances include an electric hot plate with rangehood, a wall oven and a dishwasher
- An open-plan dining area again sits below high cathedral ceilings
- A separate living or lounge room

- A large multi-purpose room with split system air-conditioning and direct access outside that will suit a range of applications
- A fabulous, fully screened outdoor entertainment area with an insulated roof
- A sparkling above-ground swim spa with shade sails and a gazebo, overlooking the private yard and surrounded by lovely established tropical gardens
- The laundry offers direct access outside to the clothesline
- A 3.92kw solar power system, 5000L rainwater tank and large garden shed
- A high entry double carport and side access, with space to add a large shed and accommodate an RV, caravan or boat

Homes of this calibre with these features in this location are always in high demand - so here is your opportunity!

Contact our team now to arrange your private inspection or video call walk-through - you will only be disappointed if you miss this one ?

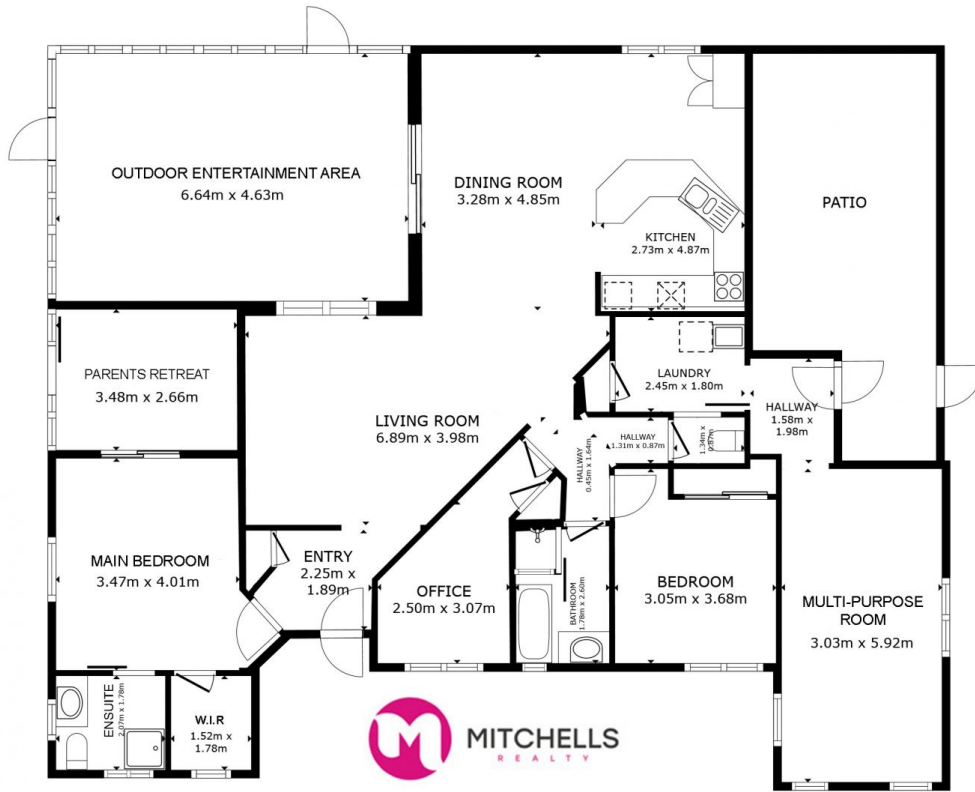
NOTE: Property boundary lines are shown as approximate/indicative only in associated images - please refer to survey plans for full details.

DISCLAIMER: Whilst every effort has been made to ensure the accuracy and thoroughness of the information provided to you in our marketing material, we cannot guarantee the accuracy of the information provided by our vendors, and as such, Mitchells Realty makes no statement, representation or warranty, and assumes no legal liability in relation to the accuracy of the information provided. Interested parties should conduct their own due diligence in relation to each property they are considering purchasing. All photographs, maps, and images are representative only for marketing purposes.

**Price** : Offers From \$950,000-  
**Land Size** : 2380 sqm  
**View** : <https://www.mitchellsrealty.com.au/property/6-homebush-road-dundowran-beach-qld/8623758>



**Scott & Katrina Mitchell**  
**0428 484 499**



FLOOR PLAN

GROSS INTERNAL AREA  
 FLOOR PLAN 179.7 m<sup>2</sup>  
 EXCLUDED AREAS : PATIO 23.2 m<sup>2</sup>  
 TOTAL : 179.7 m<sup>2</sup>  
 SIZES AND DIMENSIONS ARE APPROXIMATE, ACTUAL MAY VARY.

