






9/58-60 Stephenson Street Scarness Qld

3  2  1 

Don't miss this opportunity to secure your paradise in one of Hervey Bay's most popular beachside suburbs of Scarness. This well-maintained two-story townhouse is perfectly positioned in the popular "Jade Gardens- complex of only 14 units.

Completed in 2007, this modern, well-maintained townhouse is ideally positioned on a spacious corner allotment, offering rear access to the large courtyard via Zephyr Street, with space to accommodate a large RV, caravan, or boat. "Jade Gardens- offers secure remote gated entry from Stephenson Street, and you will find this great townhouse is located in a quiet corner backing onto Zephyr Street and a lovely parkland reserve to the rear.

Unit 9/58-60 Stephenson Street, Scarness, features: -

- A modern, well-maintained two-story townhouse in a quiet corner of the popular, secure gated community at "Jade Gardens- (completed in 2007)
- Two street accesses via Zephyr Street with space to accommodate a large RV, caravan or boat
- Three spacious bedrooms, all with ceiling fans and built-in wardrobes
- The main bedroom includes a ceiling fan, two built-in wardrobes, and an ensuite
- The bathroom includes a shower over the bath and a vanity, plus a separate toilet
- A powder room with a toilet on the ground floor
- An additional living area or retreat upstairs with a study nook and reverse cycle split system air-conditioning
- The kitchen features stone benchtops with a breakfast bar, offering ample bench and storage space, plus a pantry
- Appliances include an electric hot plate with a rangehood, a wall oven, and a dishwasher

- An open plan living and dining area off the kitchen with high ceilings and reverse cycle split system air-conditioning
- A covered outdoor entertainment area, overlooking the private courtyard and parkland to the rear
- A secure single garage with a remote door and direct internal access to the home
- The laundry is located to the rear of the garage
- A large garden shed
- Rent appraisal \$540 - \$560 per week

Astute investors will know it is always about location, location, location, and Hervey Bay is still one of the fastest-growing regions in Qld, with a tight rental vacancy rate of less than 1%, making this home a sound investment opportunity as well.

Homes in this price point are always in high demand - so don't miss this opportunity?.

Contact our team now to arrange your private inspection or video call walkthrough - you will only be disappointed if you miss this one ?.

NOTE: Property boundary lines are shown as approximate/indicative only in associated images - please refer to survey plans for full details.

DISCLAIMER: Whilst every effort has been made to ensure the accuracy and thoroughness of the information provided to you in our marketing material, we cannot guarantee the accuracy of the information provided by our vendors, and as such, Mitchells Realty makes no statement, representation or warranty, and assumes no legal liability in relation to the accuracy of the information provided. Interested parties should conduct their own due diligence in relation to each property they are considering purchasing. All photographs, maps, and images are representative only for marketing purposes.

Price : \$ 635,000
Land Size : 72 sqm
View : <https://www.mitchellsrealty.com.au/property/95860-stephenson-street-scarness-qld/8622622>

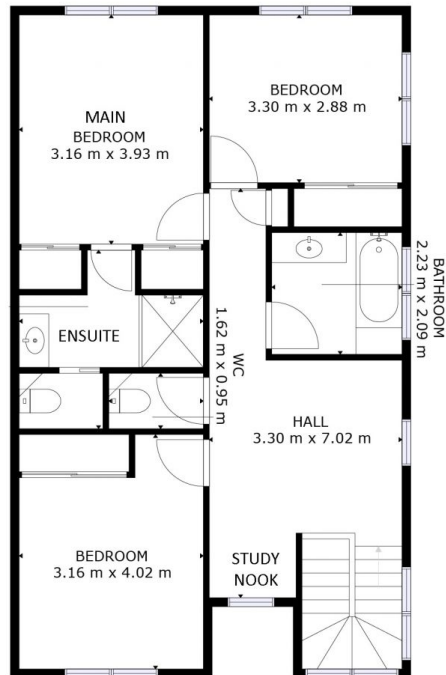


Scott & Katrina Mitchell
0428 484 499



GROSS INTERNAL AREA
FLOOR 1: 48 m², FLOOR 2: 72 m²
EXCLUDED AREAS: PATIO: 15 m², GARAGE: 23 m²
TOTAL: 120 m²
SIZES AND DIMENSIONS ARE APPROXIMATE, ACTUAL MAY VARY.

FLOOR 1



GROSS INTERNAL AREA
FLOOR 1: 48 m², FLOOR 2: 72 m²
EXCLUDED AREAS: PATIO: 15 m², GARAGE: 23 m²
TOTAL: 120 m²
SIZES AND DIMENSIONS ARE APPROXIMATE, ACTUAL MAY VARY.

FLOOR 2

