



MITCHELLS
REALTY



66 Tina Drive Urangan QLD

4 2 2

This captivating custom-built home was only completed in 2021 and is perfectly positioned on just over an acre or 4214m², offering two street access and a private dam delivering a flawless blend of indoor and outdoor living in Urangan, one of Hervey Bays' most sought-after suburbs.

The scale and quality of this stunning home are immediately apparent upon entering; it truly is a statement of style, flaunting an enviable, innovative design at just over 396m² that will be envied by all who visit.

66 Tina Drive, Urangan, features: -

- A 4214m² lifestyle allotment with a private dam and lovely established landscaped grounds
- A stunning modern home (completed in 2021) with ducted air conditioning throughout
- Four spacious bedrooms, all with ceiling fans, ducted air conditioning and built-in wardrobes
- Three of these bedrooms are situated at one end of the home, with the main bedroom located to the other - this design will be ideal for those with teenagers or extended family living with them
- The main bedroom includes ducted air conditioning, a ceiling fan, a walk-in wardrobe, and a lavish ensuite with floor-to-ceiling tiles, a vanity with two basins, a shower, and a toilet
- The bathroom features floor-to-ceiling tiles, a luxurious bath, shower, vanity, and a separate toilet
- A vast open-plan living and dining area
- A wonderfully appointed kitchen, complete with a large island preparation bench, a breakfast bar, beautiful stone bench tops, loads of storage, and a walk-in butler's pantry
- High-quality European ILVE appliances include a large six-burner gas cooktop with a rangehood, 900mm oven, a

dishwasher, and plumbing provision for refrigerators

- A separate media room
- An expansive covered outdoor entertaining deck overlooking the private dam and grounds
- A sparkling in-ground heated swimming pool with a spa seat and shade umbrella
- The laundry includes ample linen storage and offers direct access outside to the clothesline
- An oversized double garage with a remote panel lift door and internal access to the home
- Rear access from Silkwood Drive with a remote entry gate and ample space to accommodate large RVs, caravans, and boats - there is also potential for a larger shed or high-entry van port if needed
- A great 6 x 6-metre workshop shed with a 6-metre awning to the front and power connected
- 13.5kw solar power system and solar hot water service
- Large shade house and selection of established fruit and citrus trees

Homes of this calibre with these features in this location are rare - so here is your opportunity!

Contact our team now to arrange your private inspection or video call walk-through - you will only be disappointed if you miss this one?

NOTE: Property boundary lines are shown as approximate/indicative only in associated images - please refer to survey plans for full details.

DISCLAIMER: Whilst every effort has been made to ensure the accuracy and thoroughness of the information provided to you in our marketing material, we cannot guarantee the accuracy of the information provided by our vendors, and as such, Mitchells Realty makes no statement, representation or warranty, and assumes no legal liability in relation to the accuracy of the information provided. Interested parties should conduct their own due diligence in relation to each property they are considering purchasing. All photographs, maps, and images are representative only for marketing purposes.

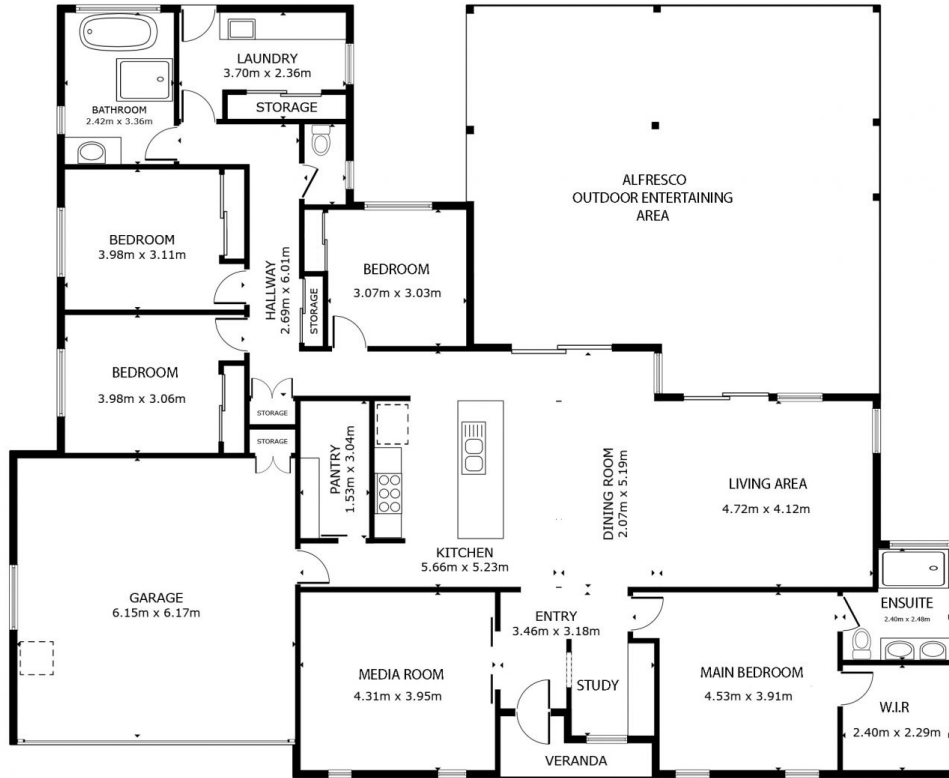
Price : Offers from \$1.3 Million

Land Size : 4214 sqm

View : <https://www.mitchellsrealty.com.au/property/66-tina-drive-urangan-qld/7893682>



Scott & Katrina Mitchell
0428 484 499



FLOOR PLAN



GROSS INTERNAL AREA
 FLOOR PLAN 185.9 m²
 EXCLUDED AREAS : GARAGE 38.0 m² DECK 72.5 m² VERANDA 3.4 m²
 TOTAL : 185.9 m²
 SIZES AND DIMENSIONS ARE APPROXIMATE, ACTUAL MAY VARY.

