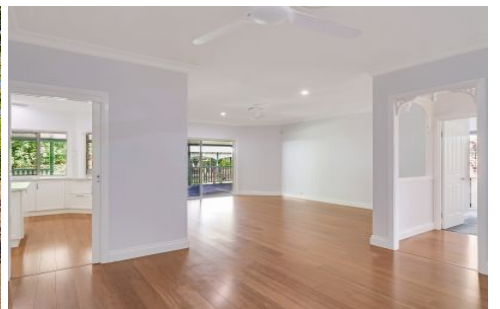




MITCHELLS
REALTY



206 Denmans Camp Road Wondunna QLD

4 4 2

Perfectly positioned on a large 4067 m2 allotment - just over an acre in the old scale - this grand homestead spans a huge 457 square meters under the roof. This home underwent a complete renovation in 2020, bringing it up to a standard rarely found across Hervey Bay - planned for those with a growing family or who have extended family living with them, it is an exceptional living retreat with space for everyone.

There is even a separate 144m2 brick unit to the rear that has been converted into two studios, both with air-conditioning, kitchenettes and bathrooms that will suite a range of applications.

206 Denmans Camp Road, Wondunna, features:-

- Large 4067m2 allotment only minutes away from the heart of Hervey Bay and beach
- A grand home spanning 457m2 under the roof with ducted and zoned reverse cycle air conditioning throughout for year-round comfort
- A separate 144m2 brick unit converted to two studios, both with air-conditioning, kitchenettes and bathrooms
- Beautiful bamboo flooring flows throughout the main home
- Four queen-sized bedrooms, all with ceiling fans and built-in wardrobes
- The main bedroom is cleverly positioned at one end of the home with both a built-in and a walk-in wardrobe, plus a lavish ensuite with floor-to-ceiling tiles, shower, vanity and a bath
- The three remaining bedrooms are positioned in a separate wing of the home with a separate living area, bathroom and toilet
- The bathroom features floor-to-ceiling tiles and a luxurious bath, shower and vanity

- A separate powder room and toilet
- A home office with built-in cabinetry/ could make up a 5th bedroom if needed
- A gourmet kitchen with a large island preparation bench and beautiful stone benchtops, excellent storage space and a pantry
- Quality appliances, including a 5-burner gas cooktop, a large wall oven and a dishwasher
- Separate open-plan living and dining areas complete with built-in cabinetry
- A huge, fully insulated media room
- A fabulous alfresco outdoor entertaining deck wraps around two sides of the home
- The laundry features floor-to-ceiling tiles and offers direct access to the clothesline
- A resort-style inground swimming pool
- A Gazebo and separate BBQ hut area
- A "Funky Monkey" outdoor ninja gym
- A large solar power system with a Tesla Backup Battery installed and stored in the utility room
- A full security system
- A double bay carport and ample space to accommodate large RV's, caravans and boats
- Beautiful and established low-maintenance tropical gardens surrounding the property
- Solar remote front entry gates
- Potential to subdivide this property into two lots - subject to council and local authority approvals

Live large with space for everyone and everything along with the convenience of having Hervey Bays' essential amenities all nearby, including shopping Centres, schools, daycare, aquatic centre, sporting grounds, TAFE, university, hospitals, golf course, boat club and marina, cafes, restaurants, esplanade and beach.

Contact our team now to arrange your private inspection or video call walk-through - you will only be disappointed if you miss this one ?

NOTE: Property boundary lines are shown as approximate/indicative only in associated images - please refer to survey plans for complete details.

DISCLAIMER: Whilst every effort has been made to ensure the accuracy and thoroughness of the information provided to you in our marketing material, we cannot guarantee the accuracy of the information provided by our vendors, and as such, Mitchells Realty makes no statement, representation or warranty, and assumes no legal liability in relation to the accuracy of the information provided. Interested parties should conduct their own due diligence in relation to each property they are considering purchasing. All photographs, maps, and images are representative only for marketing purposes.

Price : \$1.6 Million
Land Size : 4067 sqm
View : <https://www.mitchellsrealty.com.au/property/206-denmans-camp-road-wondunna-qld/7858787>



Scott & Katrina Mitchell
0428 484 499



MITCHELLS
REALTY

FLOOR PLAN

GROSS INTERNAL AREA
FLOOR PLAN 343.3 m²
EXCLUDED AREAS : BALCONY 13.6 m² DECK 107.3 m² VERANDA 2.9 m²
TOTAL : 343.3 m²
SIZES AND DIMENSIONS ARE APPROXIMATE, ACTUAL MAY VARY.

