



**MITCHELLS**  
REALTY



### 8 Tanna Street Pialba Qld

4 2 1

This character-filled two-story home was built in 1990 and has been well-maintained, tastefully refurbished and thoughtfully positioned on a spacious 600m<sup>2</sup> allotment in a quiet no-through street only minutes away from just about everything that makes Hervey Bay great.

This home will be ideal for those looking to make a "Sea Change- and secure a home base to return to between your nomadic travels, as well as the astute investor looking to capitalise on the tight rental vacancy rates with a property in such a handy location close to essential amenities.

8 Tanna Street, Pialba, features:-

- 600m<sup>2</sup> allotment in a convenient location near key amenities
- Tastefully refurbished Character filled two storey home (built in 1990)
- Four bedrooms with ceiling fans and three include built-in wardrobes
- The main bedroom includes split system air-conditioning, a built-in and walk-thru wardrobe into a two-way bathroom
- A two-way bathroom with a classic clawfoot bath, shower, vanity, and a separate toilet
- Open plan living and dining area with ornate cornices, plantation shutters, ceiling fan and reverse cycle split system air-conditioning
- The kitchen features ample bench and storage space, plus a walk-in pantry
- Appliances include an electric stove with a rangehood and a dishwasher
- A large multi-purpose utility room with a shower and toilet
- The laundry offers direct access outside to the clothesline

- A verandah spans across the front of the home
- A large covered outdoor entertaining area to the rear
- A detached, single-car garage with power and lined workshop room
- Rent appraisal \$580 - \$600 per week

Homes at this price point in this location are rare and always in high demand - and the seller has reduced the price for an immediate sale!

Contact our team now to arrange your private inspection or video call walk-through - You will only be disappointed if you miss this one?

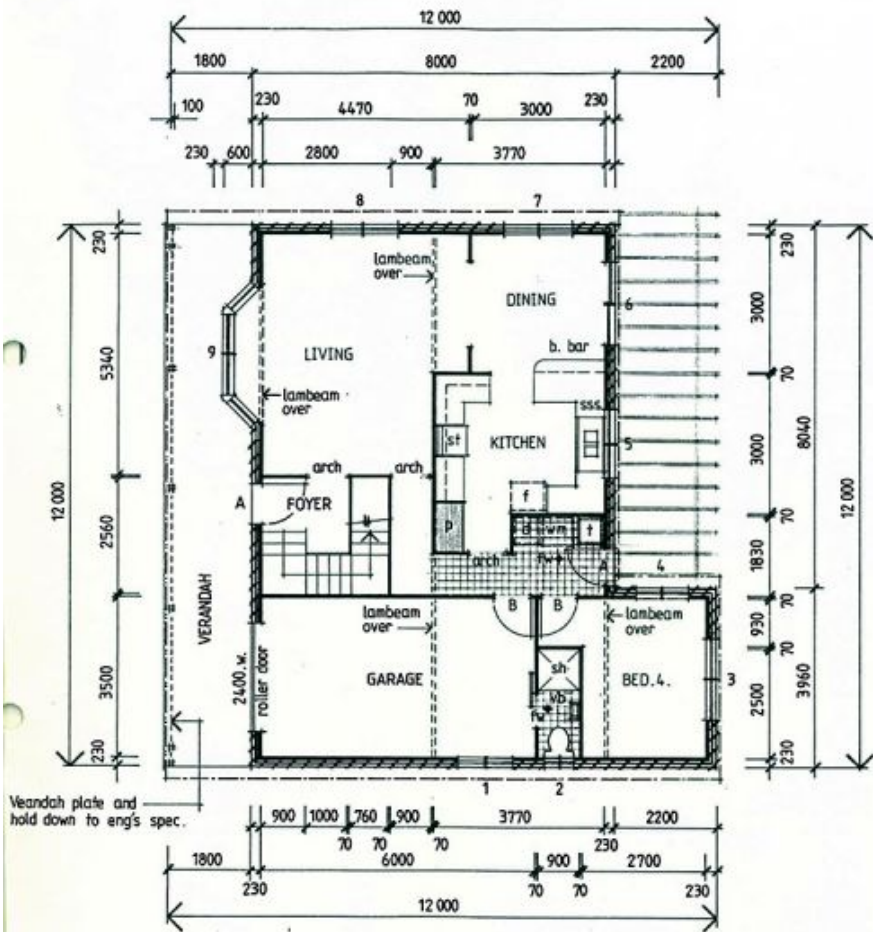
NOTE: Property boundary lines are shown as approximate/indicative only in associated images - please refer to survey plans for full details.

DISCLAIMER: Whilst every effort has been made to ensure the accuracy and thoroughness of the information provided to you in our marketing material, we cannot guarantee the accuracy of the information provided by our vendors, and as such, Mitchells Realty makes no statement, representation or warranty, and assumes no legal liability in relation to the accuracy of the information provided. Interested parties should conduct their own due diligence in relation to each property they are considering purchasing. All photographs, maps, and images are representative only for marketing purposes.

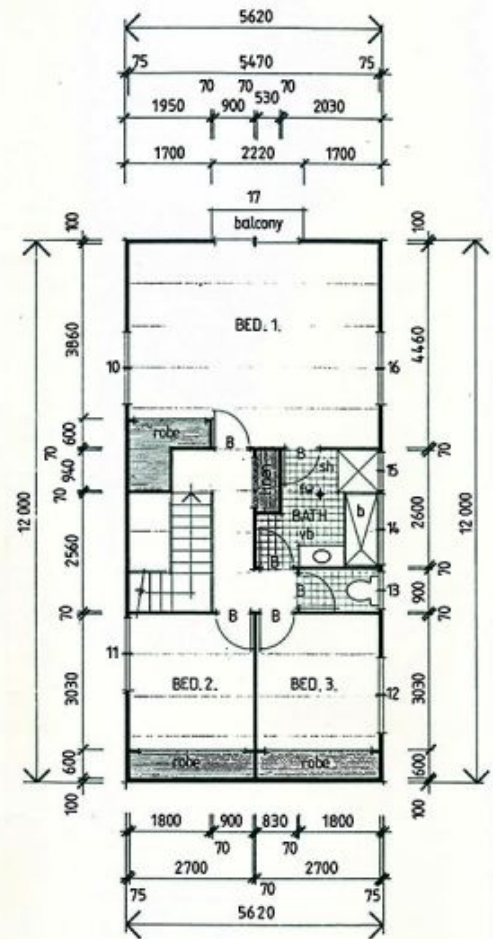
**Price** : Under Contract Offers from \$649,000-  
**Land Size** : 600 sqm  
**View** : <https://www.mitchellsrealty.com.au/property/8-tanna-street-pialba-qld/7853836>



**Scott & Katrina Mitchell**  
**0428 484 499**

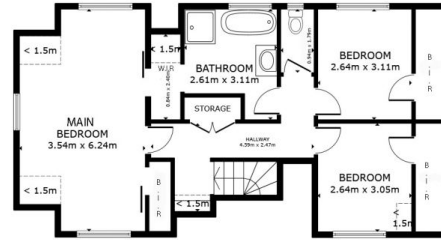
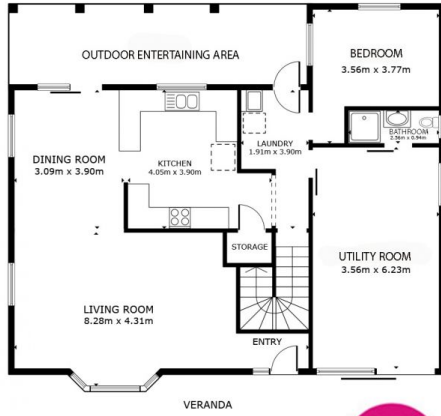
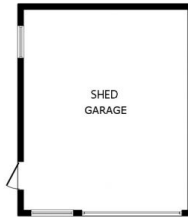


GROUND FLOOR PLAN



FIRST FLOOR PLAN





FLOOR 1



MITCHELLS  
REALTY

FLOOR 2

GROSS INTERNAL AREA  
 FLOOR 1 104.3 m<sup>2</sup> FLOOR 2 63.8 m<sup>2</sup>  
 EXCLUDED AREAS : PATIO 19.0 m<sup>2</sup> VERANDA 21.7 m<sup>2</sup> GARAGE 26.1 m<sup>2</sup> REDUCED  
 HEADROOM 3.3 m<sup>2</sup>  
 TOTAL : 168.1 m<sup>2</sup>  
 SIZES AND DIMENSIONS ARE APPROXIMATE, ACTUAL MAY VARY.