



MITCHELLS
REALTY



503/468 Charlton Esplanade Torquay QLD

2 2 1

The stunning Grand Mercure Allegra Hervey Bay is a luxury apartment complex comprising of 49 units, opposite the beautiful Shelly Beach. This is where you will enjoy the life that comes with living in this idyllic location with resort facilities on the property, including a sparkling 22-metre heated resort swimming pool, a fitness centre, gym and sauna - and you have the popular "SeaBar 469" directly at the front of the property, serving a fresh new dining experience for locals and visitors alike. Plus, you have 24-hour security with on-site management.

Start your day with a swim or paddle board directly opposite the resort while taking advantage of Hervey Bays' year-round sub-tropical climate, or take a stroll or ride along the world-class North-facing Esplanade with several boutique cafes and restaurants to choose from and enjoy.

Unit 503 / 468 Esplanade Torquay - Allegra Hervey Bay features:

- 5th floor unit perfectly positioned to capture the panoramic sea views
- An expansive private balcony with two covered areas that rivals most penthouses
- 24-hour security with on-site management and internal lift access
- Two spacious bedrooms with ceiling fans, ducted air conditioning and built-in wardrobes
- The main bedroom includes a large built-in wardrobe, and lavish ensuite with floor-to-ceiling tiles and double basins, a spa bath, shower and toilet, and a private balcony offering sea views
- The guest bedroom has access to the main balcony with sea views
- The bathroom features floor-to-ceiling tiles and includes a shower, vanity and toilet
- A well-appointed kitchen with a large island preparation bench featuring beautiful stone benchtops, a breakfast bar,

great storage, and an integrated wall pantry

- Quality appliances include an electric hot plate with a range hood, an oven and a dishwasher
- A vast open-plan dining and living area that seamlessly connects with the private balcony
- Ducted and zoned reverse cycle air conditioning that flows throughout the apartment
- Internal European-style laundry
- A secure, single-car space with a lock-up storage area in the basement and internal lift access.
- Resort facilities include a 22-metre heated swimming pool, a gym and a sauna

Apartments offering these features and a private balcony with views as spectacular as these rarely become available - so here is your opportunity!

Contact our team now to arrange your private inspection or video call walk-through - you will only be disappointed if you miss this one ?

NOTE: Property boundary lines are shown as approximate/indicative only in associated images - please refer to survey plans for full details.

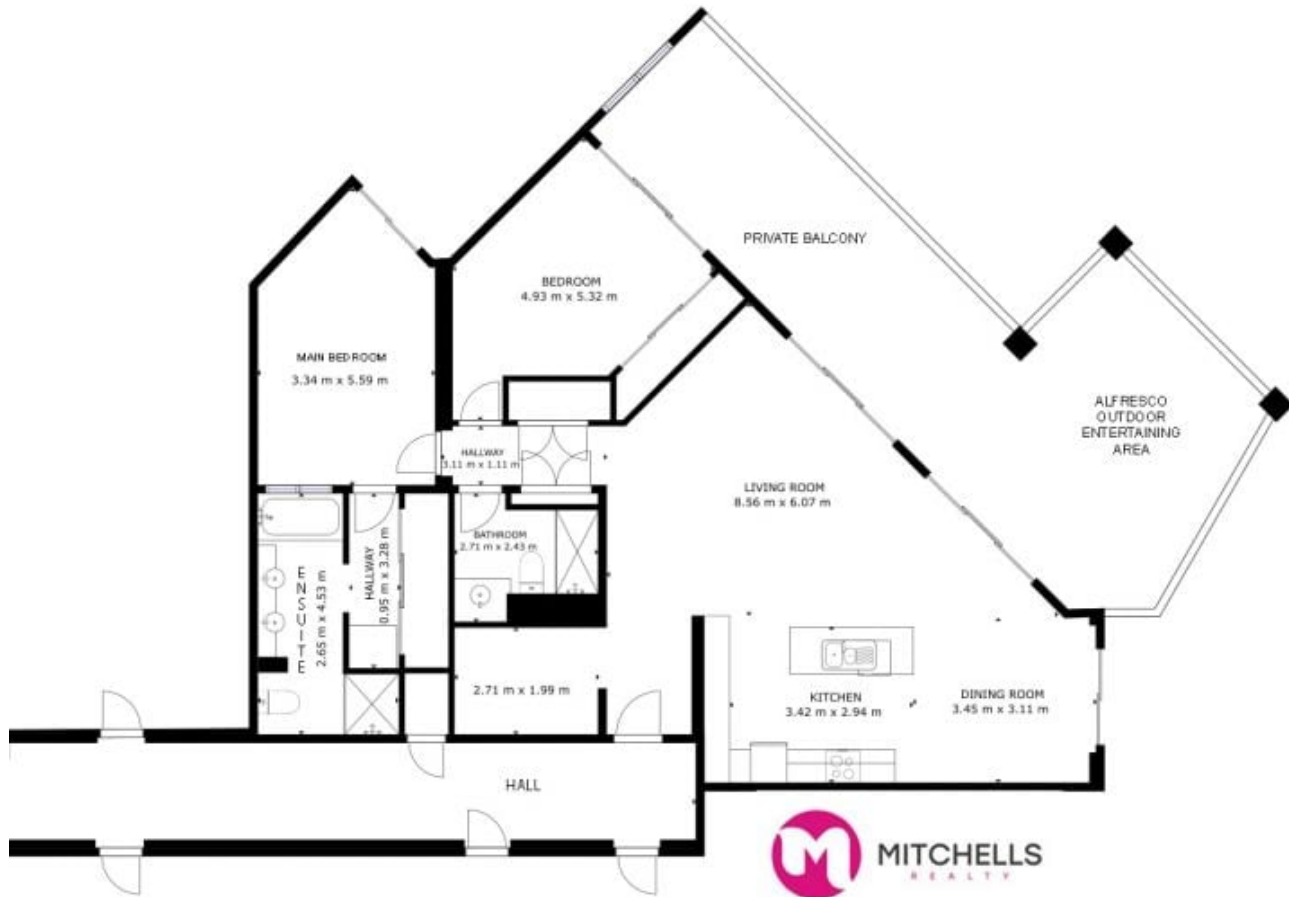
DISCLAIMER: Whilst every effort has been made to ensure the accuracy and thoroughness of the information provided to you in our marketing material, we cannot guarantee the accuracy of the information provided by our vendors, and as such, Mitchells Realty makes no statement, representation or warranty, and assumes no legal liability in relation to the accuracy of the information provided. Interested parties should conduct their own due diligence in relation to each property they are considering purchasing. All photographs, maps, and images are representative only for marketing purposes.

Price : \$ 920,000

View : <https://www.mitchellsrealty.com.au/property/503468-charlton-esplanade-torquay-qld/7843607>



Scott & Katrina Mitchell
0428 484 499



FLOOR AREA - APPROX 202.19m²